

# NINOX

MOBILE UNIT · HEALTHCARE · PRIMARY CARE · 2023



MOBILE UNIT · HEALTHCARE · PRIMARY CARE

## The Clinic That Travels

*A mobile health unit built to bring primary care directly to Colombian communities*

CLIENT

**SIES Salud**

LOCATION

**Colombia**

YEAR

**February 2023**

[ninoxcorp.com](http://ninoxcorp.com)

CLIENT

## SIES Salud

SIES-SALUD

HEALTH

MOBILE

PRIMARY-CARE

PREVENTION

MOBILE-UNIT

COLOMBIA

*Colombia is a country of extraordinary geographic diversity — and persistent, stubborn gaps in healthcare access. For millions of Colombians living in peripheral neighborhoods, rural zones, or communities with limited mobility, a medical appointment can require expensive travel, long waits, and often the quiet decision simply not to go. In February 2023, SIES Salud chose a different approach: instead of waiting for patients to reach the healthcare system, they would bring the system to the patients. To do that, they commissioned NINOX Corporation to build a Mobile Health Unit — a fully equipped clinic capable of deploying anywhere in Colombia from the back of a Mitsubishi Fuso F1 truck.*

## Health for All: The Challenge of Access Equity

---

Beyond macroeconomic indicators, health equity is measured in practical terms: how long it takes a person to reach a doctor, how much that journey costs, and how many hours of work or family time it consumes. For communities in areas underserved by the formal health system — and for workers whose schedules make routine appointments an impossible logistical feat — prevention and early disease detection become unaffordable luxuries rather than basic rights.

SIES Salud has spent years building a model of care centered on the patient and oriented toward preventive medicine. Their conviction is simple but radical: healthcare cannot wait for people to come to the system; the system must go to where people are. Guided by that principle, the organization decided to invest in a tool capable of turning any open space — a park, a corporate courtyard, a public square — into a functional, dignified medical care point.

The need was simultaneously technical and human. A basic medical transport vehicle would not suffice. What was required was a unit that projected trust and professionalism, that contained the clinical spaces needed for a complete consultation, and that could operate autonomously in locations without hospital infrastructure. That was the level of demand placed before NINOX Corporation.



*The unit deployed at a community health event, with its expanded module open and medical staff attending to the public.*

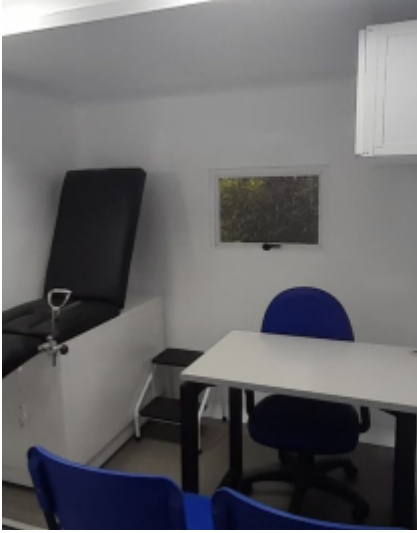
## Engineering a Clinic on Wheels

---

The central engineering challenge was converting the body of a standard cargo truck into a functional, safe, and comfortable clinical environment — without compromising road legality or maneuverability. NINOX selected a Mitsubishi Fuso F1 chassis, valued for its proven robustness across Colombia's varied terrain, and over it constructed from scratch a custom aluminum coachwork body with an expandable lateral module. Once parked and deployed in the field, that slide-out section significantly increases the usable floor area, transforming the perceived scale of the workspace.

The interior layout demanded meticulous functional architecture. The available space needed to accommodate simultaneously: a fully equipped medical consultation room with an articulated examination table, physician's workstation, patient seating, and dedicated clinical lighting; an independent sanitary module with a stainless steel handwashing sink and portable sanitary unit; and a sample storage and work area equipped with a chest-type refrigerator, laboratory countertop, and medical supply cabinet. Every centimeter was designed to maximize functionality without making the medical team feel constrained.

The interior finish — high-durability white composite panels throughout — facilitates cleaning and sanitary control, a non-negotiable requirement in any health service environment. Recessed LED lighting ensures adequate visibility for clinical examination at any hour of the day, while the integrated air conditioning system maintains comfortable working conditions for both medical staff and patients under the demands of the Colombian tropical climate.



*The consultation room: articulated exam table, physician's desk, and patient seating — a complete clinical space compressed with precision engineering.*



*The unit's central corridor, showing the full depth of the interior with recessed LED lighting, compartment doors, and sanitary-grade finishes.*



*Sample storage and work area, featuring a chest refrigerator, laboratory countertop, and overhead medical supply cabinet.*

## A Complete Clinic, Ready to Roll

The unit delivered to SIES Salud in February 2023 represents the synthesis of mobility and clinical capability. On the outside, the white coachwork with blue stripes and SIES Salud's institutional graphics project professionalism and trust — elements that are not cosmetic but strategic. The first impression a mobile unit makes when it arrives in a neighborhood largely determines whether people will approach it and accept care. A poorly finished vehicle invites skepticism; a clinic-grade exterior invites confidence.

Inside, the consultation room contains everything needed for a complete medical assessment: an adjustable clinical table, a physician's workspace with access to diagnostic equipment, and private patient seating. The sanitary module — fully independent — meets the hygiene standards required of any formal healthcare environment. And the storage area allows medicines, supplies, and biological samples to be maintained at the temperatures and security levels required by health regulations.

The lateral expansion module radically transforms the perception of the interior once deployed: what appears from the outside to be a conventional-sized truck becomes, when parked and extended, a well-organized and spacious medical workspace. This design reflects a philosophy NINOX has refined across dozens of builds: form follows function, and function is always the dignity of the service being delivered.



*The completed unit ready for service: NINOX coachwork on a Mitsubishi Fuso F1 chassis, carrying the SIES Salud identity in a tropical Colombian setting.*



*Rear-lateral view of the unit with the expansion module fully deployed, revealing the scale of operational space available in the field.*



*The independent sanitary module with stainless steel sink and portable sanitary unit — clinical-grade hygiene conditions anywhere in the country.*

## The Appointment Comes to You

---

Since entering service, the SIES Salud Mobile Health Unit has traveled to public spaces, corporate campuses, and community events across Colombia, delivering general medicine consultations, vital signs monitoring, preventive health screening, and early detection services to populations that would otherwise face significant barriers to that care. The sight of the white truck with blue stripes parked in a plaza or beneath the canopy of a civic pavilion has become a recognizable emblem of institutional commitment to health access.

The strategic value of the unit extends well beyond the number of consultations it logs. Each time it deploys in a neighborhood or a company yard, it communicates something concrete: for SIES Salud, healthcare is not an administrative process the citizen must navigate — it is a right the institution is prepared to deliver at the door. That reorientation of the service model produces lasting effects on organizational culture and community trust that reach far beyond what any facility-based clinic can achieve.

For NINOX Corporation, this project reaffirms the purpose at the core of every build: designing and constructing specialized vehicles that do not merely satisfy technical specifications, but enable fundamental human missions. Building a clinic that travels is building access. And in healthcare, access is life.



*The unit in operation at a community health event, with staff and equipment fully active — the mobile clinic model in action.*

---

*“The SIES Salud Mobile Health Unit is the clearest demonstration of what specialized vehicle engineering achieves when it is placed in service of human wellbeing. A chassis, a custom body, a carefully considered interior — and the result is that thousands of Colombians now have access to a medical consultation that simply did not exist within reach of their community before. NINOX builds vehicles. But what it delivers to its clients is always something more: the capacity to fulfill their mission, wherever that mission takes them.”*

...